



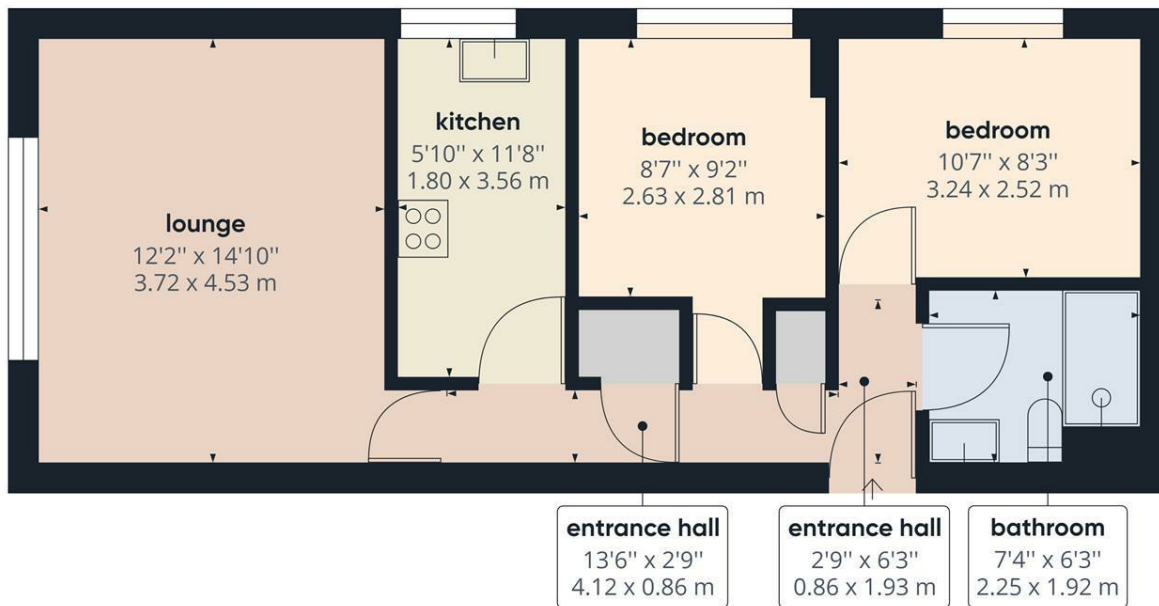
16 Wyatt Place, Strood, Kent, ME2 2DQ

GUIDE PRICE £175,000 to £185,000**2 BEDROOMS**GROUND FLOOR**ALLOCATED PARKING**CLOSE TO TOWN CENTRE AND STATION**

Be quick to view this fantastic two bedroom ground floor flat with a 163 year lease and NO CHAIN. Wyatt place is situated in an ideal location for easy access to Strood train station and the town centre and has the huge benefit of allocated parking. A communal entrance with a door entry system leads to the internal hallway offering access to all rooms. The lounge is of a good size and looks over the communal garden which backs onto Northcote recreational ground. There is a fitted kitchen with units, a shower room with larger than average shower and two double bedrooms. The property is heated by electric storage heaters and the windows are double glazed. There is updating needed to bring the property up to a modern standard but we believe this would make an ideal first time buy. Call now to book in your internal viewing. COUNCIL TAX BAND B. Grant of probate and service charge/ground rent are awaited.

- NO CHAIN
- 2 BEDROOMS
- FITTED KITCHEN
- LOUNGE
- SHOWER ROOM
- PARKING
- COMMUNAL GARDEN
- GUIDE PRICE £175K-£185K
- COUNCIL TAX BAND B

£175,000



Approximate total area⁽¹⁾
550.19 ft²
51.11 m²

(1) Excluding balconies and terraces

While every attempt has been made to ensure accuracy, all measurements are approximate, not to scale. This floor plan is for illustrative purposes only.

GIRAFFE360

